



# NexTORK

NEXT GENERATION BOLTING SOLUTIONS



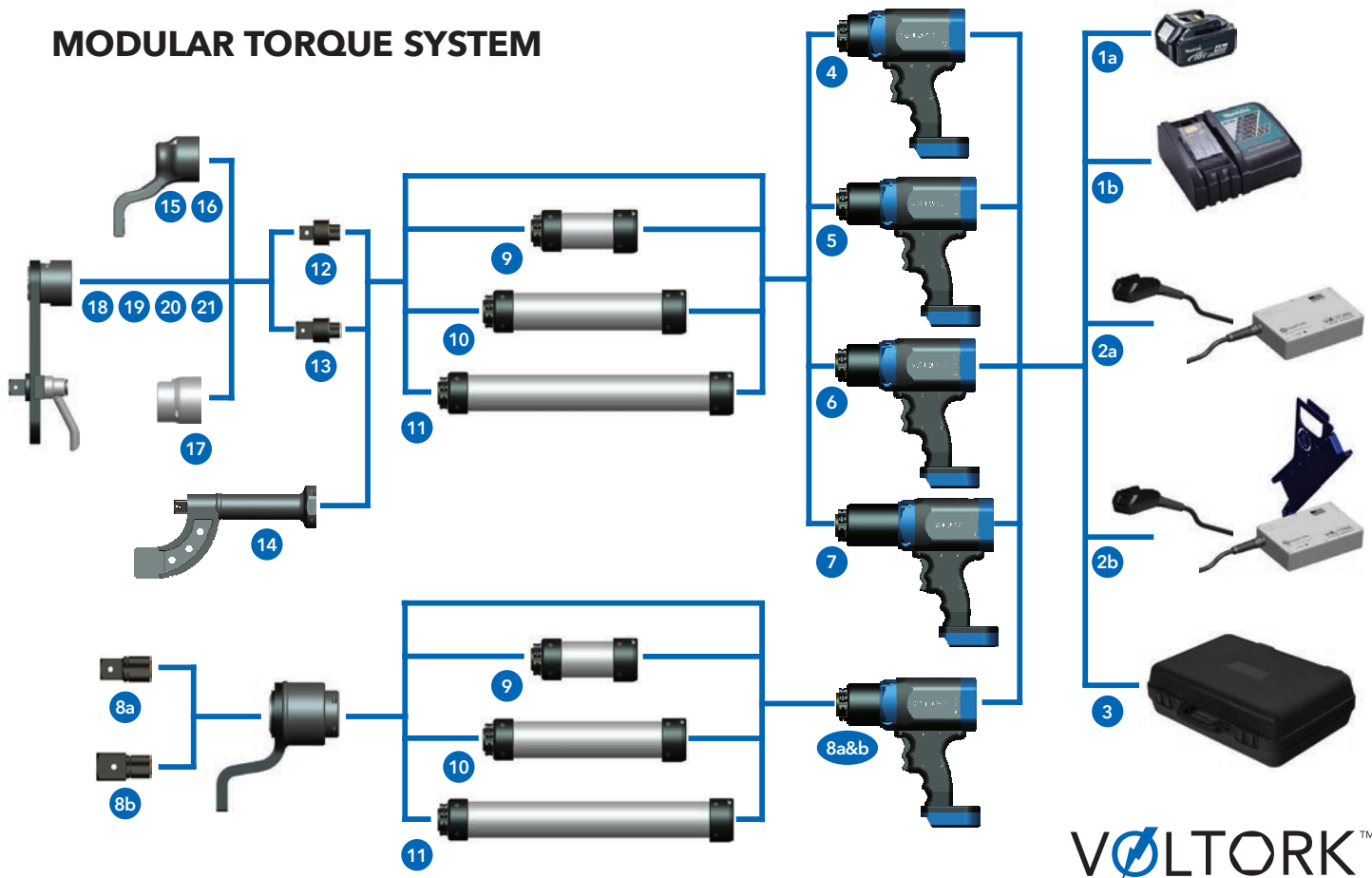
**VOLTORK™**

**ELECTRIC TORQUE WRENCHES**

# VOLTORK™ ELECTRIC TORQUE WRENCHES

The VOLTORK™ line of electric torque wrenches was created to address several critical needs of the heavy bolting industry. Everyone enjoys the freedom that comes along with a powerful electric torque wrench, but that usually means making compromises such as: handling a heavy tool or one that is light enough but fragile, low number of cycles per battery charge, low torque accuracy, no clear indication of cycle completion, limited number of torque settings and the list goes on. When we developed the VOLTORK™ product line, we considered and addressed all these limitations. As you look at the performance data in the table that follows, consider the not only the maximum torque output in relation to the tool weight, but also the minimum torque each tool is capable of – our tools have at least a 10:1 ratio of max to min torque which results in fewer tools needed for each job. Our NT2600B tool can even reach a 32.5:1 max/min ratio – no other tool on the market can do that. Our published torque accuracy is 5% but as you use a VOLTORK™ you will notice it far exceeds that. Our tools are purpose built and tested for heavy industrial use, not repurposed plastic drills with makeshift gearboxes; we use aircraft aluminum and high-performance steel to manufacture our torque wrenches right here in the USA.

## MODULAR TORQUE SYSTEM



VOLTORK™

Item	Part No	Description
1a	NTC-000001	18V Li-Ion BATTERY, 4.0 Ah
1b	NTC-000002	18V BATTERY CHARGER
2a	NTA-000077	AC POWER SUPPLY - LOW PROFILE
2b	NTA-000078	AC POWER SUPPLY - CARRY HANDLE & CABLE STORAGE
3	NTC-000003	CASE, BATTERY TOOL
4	NTA-000015	NT200B ELECTRIC TORQUE WRENCH, 200 FT-LB, 60.1 RPM
5	NTA-000016	NT500B ELECTRIC TORQUE WRENCH, 500 FT-LB, 17.4 RPM
6	NTA-000017	NT800B ELECTRIC TORQUE WRENCH, 800 FT-LB, 12.2 RPM
7	NTA-000018	NT1300B ELECTRIC TORQUE WRENCH, 1300 FT-LB, 6.6 RPM
8a	NTA-000020	NT2600B ELECTRIC TORQUE WRENCH, 1" SQ, 2600 FT-LB, 3.0 RPM
8b	NTA-000019	NT2600B ELECTRIC TORQUE WRENCH, 1-1/2" SQ, 2600 FT-LB, 3.0 RPM
9	NTA-000041	6" TOOL EXTENSION

Item	Part No	Description
10	NTA-000042	12" TOOL EXTENSION
11	NTA-000043	18" TOOL EXTENSION
12	NTA-000044	3/4" STANDARD SQUARE DRIVE
13	NTA-000045	1" STANDARD SQUARE DRIVE
14	NTA-000046	WHEEL BOLTING ATTACHMENT
15	NTA-000031	STANDARD STEEL REACTION ARM, 1300 FT-LB MAX
16	NTA-000028	STANDARD ALUMINUM REACTION ARM, 500 FT-LB MAX
17	NTF-000039	REACTION ARM WELD BLANK FOR CUSTOM APPLICATIONS
18	NTA-000084	SLIDING REACTION ARM 3/4" SQUARE DRIVE 3" to 8.5" RANGE
19	NTA-000083	SLIDING REACTION ARM 1" SQUARE DRIVE 3" to 8.5" RANGE
20	NTA-000082	SLIDING REACTION ARM 3/4" SQUARE DRIVE 4" to 12" RANGE
21	NTA-000081	SLIDING REACTION ARM 1" SQUARE DRIVE 4" to 12" RANGE

## FEATURES FOR ALL MODELS

Oversized brushless motor ensures maintenance-free operation, long life and low operating temperature

Drive receptacle and reaction mount compatible with all existing NextTORK accessories

Solid aircraft aluminum handle and motor housing for durability

Forward / Reverse rocker trigger

Makita® compatible 18V Li-Ion battery or AC power supply



### Key features:

- Operates in torque control or turn-of-nut modes
- 100% remotely operated using optional equipment
- Cycle completion is indicated by 5 flashing LEDs and automatic reverse move to aid in reaction arm removal
- Turn-of-nut cycle completion also includes display of total achieved torque as an extra check
- Square drives can be easily replaced if damaged or a different size is needed
- Advanced thermal management for motor and circuits
- Motor temperature and tool voltage displayed with a single push of a button
- Gearbox rotates independently of tool housing for operator safety

## NT200B • NT500B • NT800B • NT1300B



5 bright yellow LEDs indicate percent completion of set torque followed by all green when cycle is completed successfully or all red if it is not.

2-line display shows set torque when operating in torque mode or pre-torque and angle when operating in turn-of-nut mode.

This button allows torque or angle to be adjusted when pressed once, toggles between torque mode and turn-of-nut mode when held for 3 seconds and changes the units when held for 5 seconds.

This button displays motor temperature and tool voltage

Large buttons allow easy operation while wearing work gloves. Pressing any buttons or the trigger powers on the tool.

Tool motor automatically stops after achieving the set torque within 5%, then turns backwards several degrees to enable easy removal of tool from reaction point and also provides visual indication that the work is complete.

# VOLTORK™ ELECTRIC TORQUE WRENCHES

## NT2600B



Two dedicated LEDs indicate whether the tool is working as an 800 ft-lb tool or a 2600 ft-lb tool at all times.

To use the NT2600B as an 800 ft-lb tool, the 2600 reducer must be removed (2 screws), and replaced by a square drive / reaction arm.

Changing the tool personality is done by pressing these 2 buttons together. Calibration parameters are automatically changed for the appropriate tool personality.

Multiple personality tools such as the NT2600B can work both as a 2600 ft-lb and as an 800 ft-lb tool – users get two completely different tools in one. That means that the minimum achievable torque is 80 ft-lb while the maximum achievable torque is 2600 ft-lb for max/min ratio of 32.5:1 They also have all the features of the other tools described above.



Removal of 2600 reducer requires the removal of two screws, then the reducer slides out.



Adding a standard square drive and reaction arm prepares the tool for operation as an 800 ft-lb tool.



This versatile tool allows torque ranges between 80 and 2600 ft-lbs. The conversion process takes under a minute.

## MODEL COMPARISON

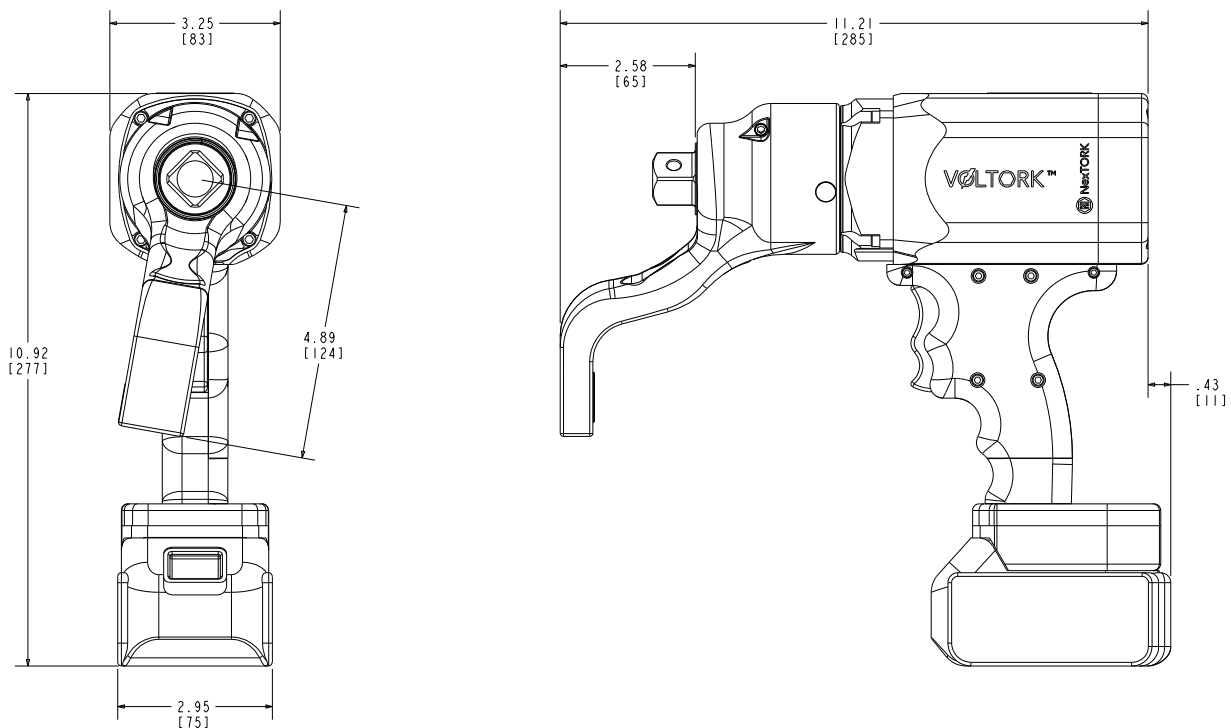
PARAMETER	NT200B		NT500B		NT800B		NT1300B		NT2600B	
	IMPERIAL	METRIC	IMPERIAL	METRIC	IMPERIAL	METRIC	IMPERIAL	METRIC	IMPERIAL	METRIC
Output Drive	3/4" SQ		3/4" or 1" SQ		3/4" or 1" SQ		1" SQ		1" or 1-1/2" SQ	
Max Torque	200 ft-lbs	271 N-m	500 ft-lbs	678 N-m	800 ft-lbs	1085 N-m	1300 ft-lbs	1763 N-m	2600 ft-lbs	3525 N-m
Min Torque	20 ft-lbs	27 N-m	50 ft-lbs	68 N-m	80 ft-lbs	108 N-m	130 ft-lbs	176 N-m	260 ft-lbs	353 N-m
Max Speed	60.1 RPM		17.4 RPM		12.2 RPM		6.6 RPM		3.0 RPM	
System Accuracy	<5%									
Tool Weight <sup>1</sup>	9.0 lbs	4.1 Kg	10.0 lbs	4.5 Kg	10.0 lbs	4.5 Kg	11.3 lbs	5.1 Kg	19.9 lbs	9.0 Kg
Total Weight	10.6 lbs <sup>2</sup>	4.8 Kg <sup>2</sup>	11.7 lbs <sup>2</sup>	5.3 Kg <sup>2</sup>	13.4 lbs <sup>3</sup>	6.1 Kg <sup>3</sup>	14.9 lbs <sup>3</sup>	6.8 Kg <sup>3</sup>	19.9 lbs	9.0 Kg
Power	Makita® compatible 18V Li-Ion 4.0 Ah standard (3.0 Ah, 5.0 Ah and 6.0 Ah also available) or AC power supply									
Warranty	1 year limited									

1 - Includes bare tool and battery - no reaction arm or square drive

2 - Includes bare tool, battery, standard aluminum reaction arm and square drive

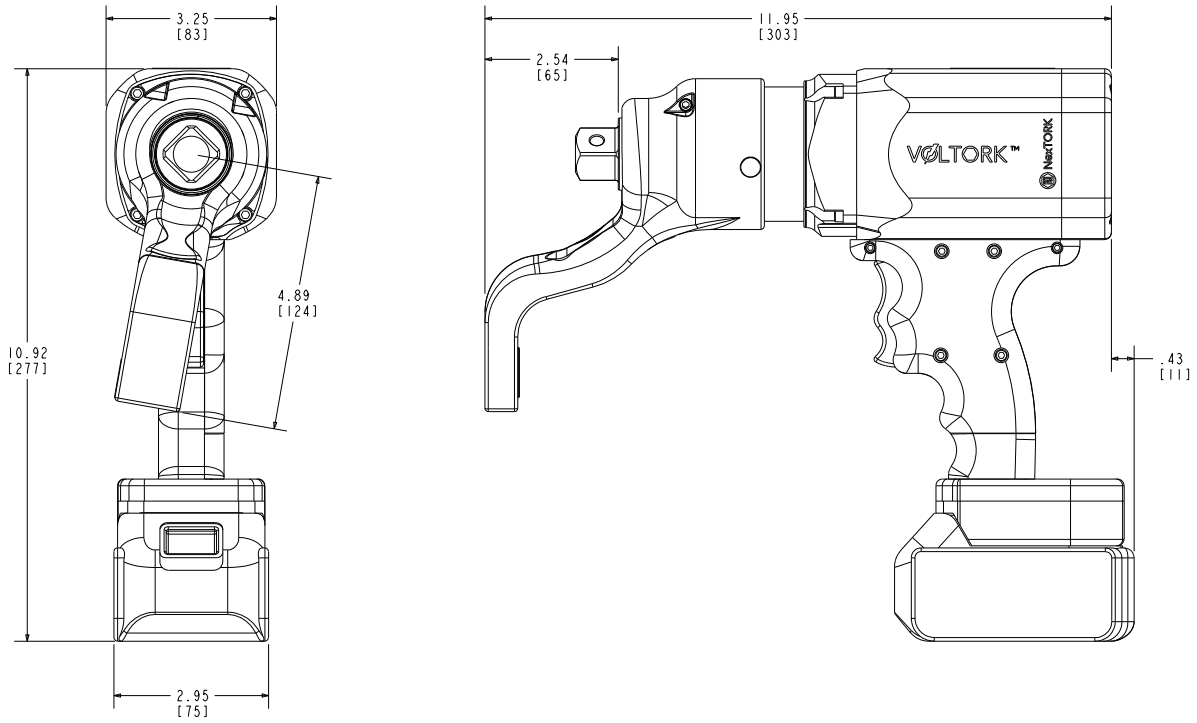
3 - Includes bare tool, battery, standard steel reaction arm and square drive

## NT200B DIMENSIONS



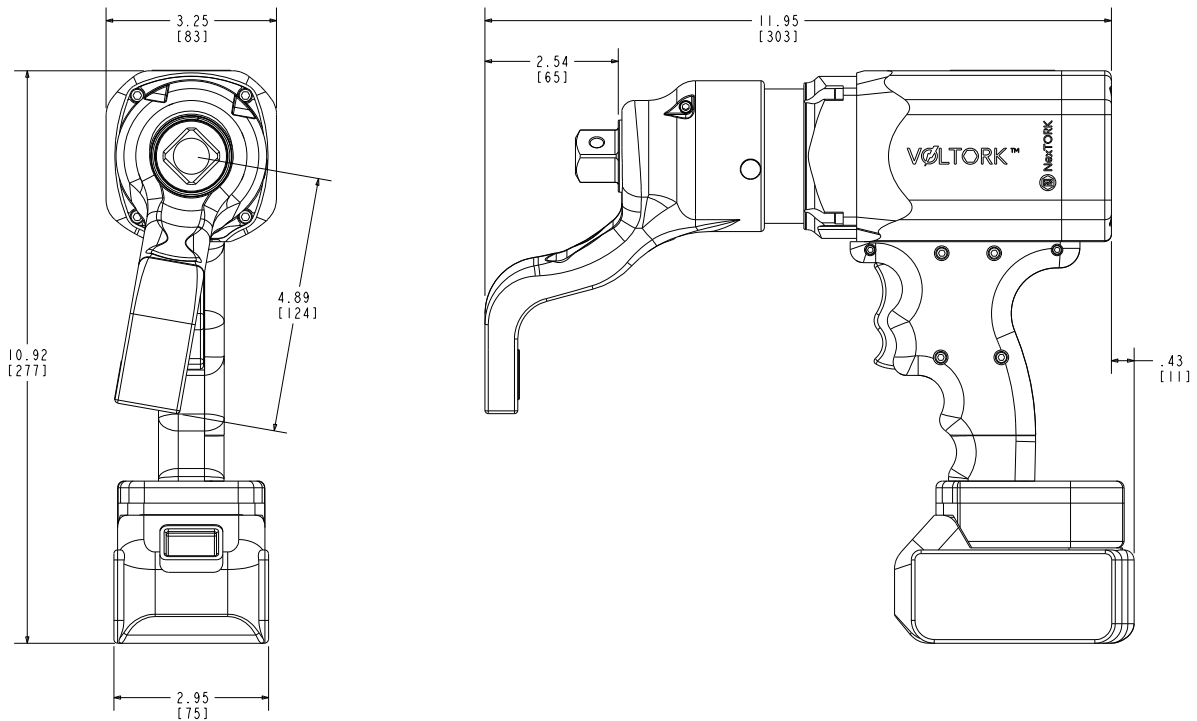
All dimensions are in inches [mm]

## NT500B DIMENSIONS



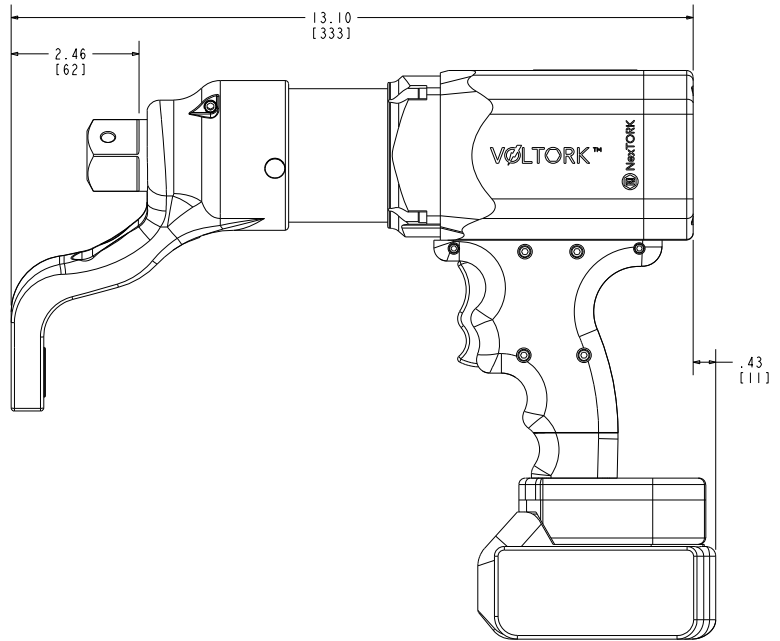
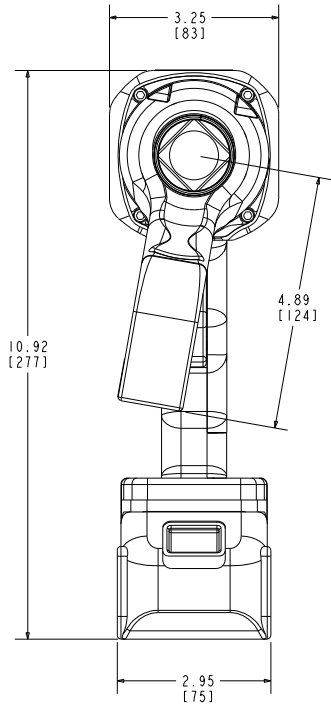
*All dimensions are in inches [mm]*

## NT800B DIMENSIONS



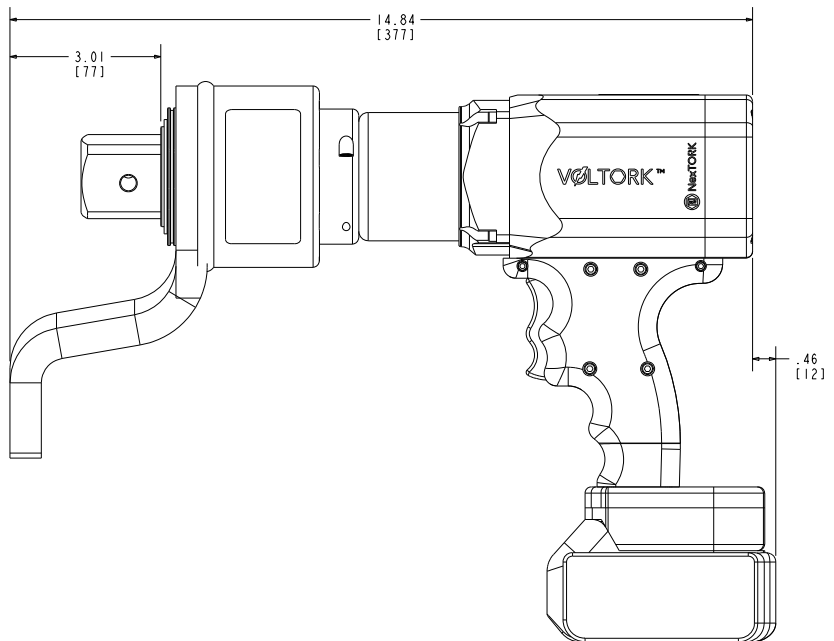
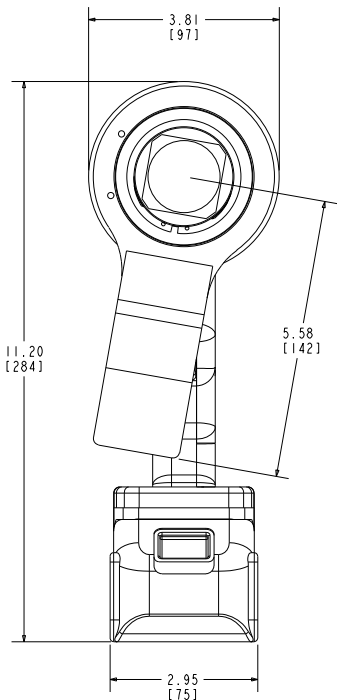
*All dimensions are in inches [mm]*

## NT1300B DIMENSIONS



All dimensions are in inches [mm]

## NT2600B DIMENSIONS



All dimensions are in inches [mm]

## FLEXIBLE POWER SOURCE - BATTERY OR AC POWER



- VOLTORK™ tools can operate with either 18V Li-Ion Makita® compatible batteries or AC power using our available VOLTORK™ AC power supply
- Recommended 18V Li-Ion Makita® batteries include the 4Ah, 5Ah and 6Ah capacities
- Tools purchased and calibrated with the battery option can also be used with the VOLTORK™ AC power supply with no additional modifications and vice versa
- The VOLTORK™ AC power supply automatically self-adjusts so it can be used with virtually any available AC voltage between 100 and 240 with 50 or 60 Hz

- The VOLTORK™ AC power supply has a flexible 24ft (7.3m) cable connecting it to the tool for minimal movement during tool operation
- The power supply is sealed and thermally protected for use in the harshest environments; power LED indicates adequate AC power
- The low-profile version (P/N NTA-000077) measures 8.76 x 5.77 x 2.17 inches (22.25 x 14.66 x 5.51cm) and weighs 4.5 lbs (2.0 Kg)  
*(weight and dimensions do not include cable)*



*An ergonomic version featuring a detachable light-weight carry handle with integrated cable storage is also available as P/N NTA-000078 with a total weight of 6.5 lbs (2.9 Kg) (not including cable)*

*This feature can also be added onto the low-profile version after purchase*

*Power is delivered via a locally available computer power cable with an IEC 320-C13 connector (not included)*



## VOLTORK™ REMOTE TORQUE CONTROL



- VOLTORK™ tools can be remotely operated via our optional VOLTORK Remote Torque Control System P/N NTA-000080
- The system includes the IR Control Module which slides over the back of the tool and plugs into a USB port on your computer
- The included software allows the user to create and run single presets (commands) or automatically run a series of presets called sequences; presets and sequences can be saved
- The system can control every aspect of the tool from a remote PC via a USB connection
- The included 45 inch (1.14 m) USB 2.0 cable can be greatly extended by the user using either passive or active extensions
- User must constrain tool handle to prevent movement while tool is turning

**NexTORK** **VOLTORK™** Remote Torque Control UI Version: 0.2.0

**Tool Info** Connected

21.1°C 19.6V

Personality: 500  
 Serial Number: 123  
 Model Number: NT500B  
 Firmware Version: 1.8  
 Hardware Revision: RevC  
 Calibration Date: 9/17/25

**Run Forward** Save Preset

Torque: 225 Ft-Lb  
 Turn of Nut: 125 Ft-Lb 90 deg  
 Preset Name: Turn of Nut to 125 and 90

**Run Reverse** Save Preset

Torque: 25 %  
 Time: 10 -secs  
 Preset Name: Reverse to 25 percent

**Presets** Open Presets

- Run ▶ Turn Forward to 225 Run Forward 225 Ft-Lb
- Run ▶ Reverse for 10 sec Run Reverse 10 secs
- Run ▶ Turn of Nut to 125 and 90 Run Forward 125 Ft-Lb for 90
- Run ▶ Reverse to 25 percent Run Reverse 25 Ft-Lb

**Messages**

WARNING:  
 TOOL WILL NOT STOP UNTIL CYCLE COMPLETES  
 ONLY PRESS RUN WHEN IT IS SAFE TO DO SO  
 THERE IS NO OPERATOR STOP FUNCTION ONCE TOOL STARTS RUNNING

### The system can send the following commands (presets) to the tool:

- Run forward (CW) to a specified torque
- Run forward (CW) using the torque and angle method
- Run in reverse (CCW) down to a specified % of full torque
- Run in reverse (CCW) for a specified amount of time

### The following information is displayed on the screen:

- Motor temperature
- Battery voltage
- Current personality
- Tool serial number
- Tool model number
- Tool firmware version
- Tool hardware revision
- Last calibration date

## VOLTORK™ USER CALIBRATION SYSTEM



- VOLTORK™ tools can be field calibrated via our optional VOLTORK™ User Calibration System P/N NTA-000076
- The system includes the IR Control Module which slides over the back of the tool and plugs into a USB port of your computer
- The included software allows the user to update the tool calibration parameters, calibration date, enable and disable the safety switch and turn-of-nut modes and update the firmware of the tool
- Calibrating VOLTORK™ tools requires the user to be able to accurately measure tool torque at various settings using their own torque measurement system (not supplied by NexTORK)

NexTORK

User Calibration System

Safety Switch    Serial Number: B260042

Turn of Nut    Model Number: NT2600B 800 Mode

Tool Firmware Version: 1.7

FW Update

File:

	Point 1	Point 2	Point 3	Point 4	Point 5	Point 6
Average	-	-	-	-	-	-
Current	260	520	1040	1560	2080	2604

Month:  Day:  Year:

Set Torque Value

Torque Ft-Lb

Calibration UI Version: 1.00

Dongle Connected

### The system can update the following parameters of the tool:

- Calibration parameters
- Calibration date
- Safety switch mode enable/disable
- Turn-of-nut modes enable/disable
- Update tool firmware
- Restore original factory calibration
- Remotely set tool to calibration setpoints

### The following information is displayed on the screen:

- Tool serial number
- Tool model number
- Current personality
- Tool firmware version
- Calibration date
- Safety Switch enable
- Turn-of-Nut enable
- Dongle connected

## VOLTORK™ TOOLS REACTION DEVICES

### STANDARD REACTION ARMS



**Standard Steel Reaction Arm**  
For use up to 1,300 ft-lbs  
P/N NTA-000031 - 2.8 lbs



**Standard Aluminum Reaction Arm**  
For use up to 500 ft-lbs  
P/N NTA-000028 - 1.0 lbs



**Wheel Bolting Attachment**  
For use up to 1,300 ft-lbs  
P/N NTA-000046 - 5.6 lbs



**Reaction Arm Blank**  
For customer made weldments  
P/N NTF-000039 - 1.7 lbs

### STANDARD SLIDING REACTION ARMS



3" to 8.5" Center to Center  
3/4" Reaction Square Drive  
P/N NTA-000084 - 6.7 lbs



3" to 8.5" Center to Center  
1" Reaction Square Drive  
P/N NTA-000083 - 6.9 lbs



4" to 12" Center to Center  
3/4" Reaction Square Drive  
P/N NTA-000082 - 8.0 lbs



4" to 12" Center to Center  
1" Reaction Square Drive  
P/N NTA-000081 - 8.3 lbs

### CUSTOM DESIGNED & BUILT REACTION ARMS



Difficult applications can be easily addressed with VOLTORK™ tools. A low-cost solution is our reaction arm blank which mounts to our tools perfectly and provides our customers with an easy way to design and build their own reaction arm. An easier option is for NextORK to design and build an application specific reaction arm like the ones above.



Local Distributor:

Designed and built in the USA. Patents Pending.  
Copyright © 2025 NexTORK

info@nextork.net • www.nextork-bolting.com



REV 112825

# VOLTORK™ ELECTRIC TORQUE WRENCHES

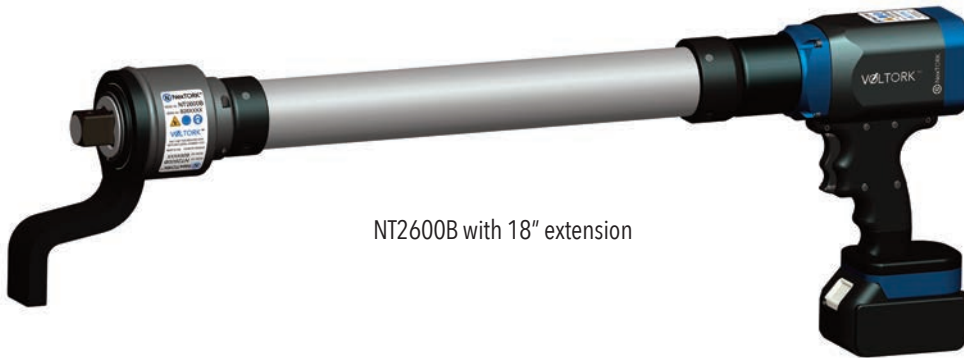
## ACCESSORIES & POSSIBILITIES



NT800B with 12" extension, 3/4" square drive and standard reaction arm



NT1300B with 1" square drive and custom reaction arm



NT2600B with 18" extension



NT500B with wheel attachment



NT1300B with 6" extension and wheel attachment